

# Flexible, Functional & Fun Learning Spaces

Your guide to  
cleverly designed,  
fit-for-purpose  
learning products  
that are made  
to last



Sebel<sup>TM</sup>

# Contents

Our story ..... 2

Ideas for primary spaces ..... 8

Ideas for secondary spaces ..... 14

Ideas for library spaces..... 24

Smart Softies™ range ..... 26

Colour Combination guide ..... 30

Explore our product range ..... 32

Fabrics and Finishes guide ..... 44





# Sebel. Pioneering better learning products for generations to come



**We've always believed great design and quality furniture should be available to everyone, and that's why we're determined to lead the way in creating better products, built to last, that help students and teachers to be their best.**

Staying power is key. We have a deep belief in lifetime products, we simply wouldn't create something with short-lived value.

Back in 1951, Harry Sebel believed students deserved better, so he did something about it with well-designed, innovative furniture that lasted. We still do that today. We reckon education's about as important as it gets – and we're proud to support it all the way.

Proudly Australian-made, most of our products are made in our Sydney factory. Come and visit us and you'll see the care and craftsmanship that goes into creating our iconic products that have been loved for decades.

**Designed and manufactured right here in Australia for over 70 years**

**We're proud to be Australian producers of high quality, Australian furniture.**

## Great businesses are built by great people

**We have a talented team who are passionate and seriously committed to what they do. Many have been with us for decades and there's a deep-rooted knowledge right across the business and it's applied in everything we do to make our products that much better, more effective and with longer lasting value.**



We believe that when bringing products into the world, they should be timeless pieces that will perform for you over several generations. That's why you won't find thin moulding or inferior materials here. We proudly engineer our products to the highest standard so that you get high performing furniture that can be loved not just by you but perhaps your grandchildren too.

**Great products designed to last**



**Harry Sebel believed furniture could be strong and fun, supportive and comfy, smart and cool.**

**His secret? Clever design, solid engineering and quality materials all the way.**

**He kept it simple but made it smart. And that's exactly what we do today.**

**Harry Sebel and his products became total Aussie legends and we intend to keep on creating legends in the making.**

**Our story**  
Bringing spaces to life

**Research  
and  
design**  
remains the  
cornerstone  
of our product  
development



**Our research never stops, we collaborate with specialist external researchers and designers, as well as our customers, to find the insights and answers to help us constantly develop products to support effective learning.**

We invest heavily in R & D to keep us at the forefront of ergonomic developments, looking for creative new ways to support student health and wellbeing.

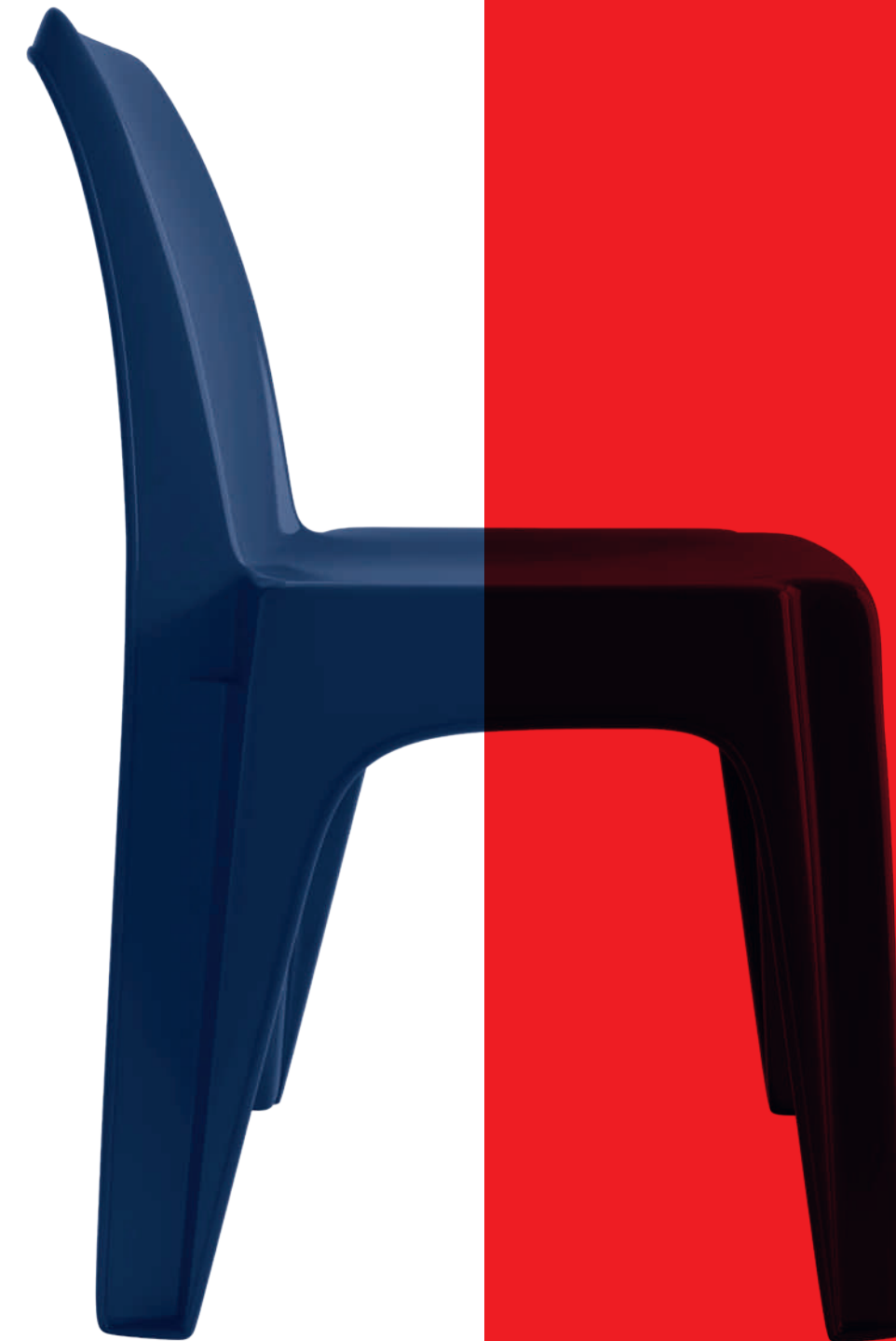
We'll always go looking for groundbreaking ways to create legendary, affordable furniture that helps people learn, live, relax and feel good.

## **We transformed seating with our iconic, durable furniture**

**Almost 50 years ago we created the Integra, the world's first monobloc plastic moulded chair – and we're leading the way again with recycled plastics and built-in durability.**

Based in Sydney, our world class manufacturing facilities adopt best practice lean methodologies making us one of the most efficient producers of high-quality products. Our factory includes advanced injection moulding machines as well as an upholstery facility and assembly department making chairs, lounges, soft furnishings, tables and desks.

Our manufacturing facilities are ISO 14001 certified and we are continually making conscious commitments to improving our environmental impact across all areas of the business, from plastic recycling efforts and product lifecycle programs, to environmental accreditation initiatives and responsible material selection.





Our story  
Sebel foundations for performance

# Sebel foundations for performance

## Everything we design and build

has to meet our five foundations to  
support the best learning spaces.

Our products are designed to  
have a long life and then a new life,  
**through advanced eco-recycling.**

# Advanced engineering. Quality manufacturing.

From the designs we create, the materials we use,  
the built-in engineering strength and our service to you,  
quality will always come first.

With Sebel you get a lot more than the chairs or table you actually receive. It's because of the research, development and rigorous testing we employ across every Sebel product before it is released into the market.

We are so serious that we have our very own independent NATA certified testing facility. It is only by the use of this testing equipment to stress-test all furniture components, that we can be absolutely confident that what we make and sell meet all domestic and international standards for strength and durability, giving the long-term service to which all our customers are entitled.

You can be sure that all of our products are tried and tested to survive the toughest of environments.

Our certified testing facilities  
are hard at work every day  
ensuring our products survive  
the toughest environments.

We also hold certificates for various global quality standards, including:

- NATA World Recognised Accreditation
- ISO 9001 Quality Management System as a quality accredited manufacturer
- ISO 14001 Environmental Management Systems Certification
- Toitū carbonzeroCert™ certified

### Smart Research

Finding the true insights  
to create the best products.

### Serious Engineering

Scientific smarts to build  
products that last.

### Genuine Craftsmanship

Skills and time to craft comfortable,  
good looking furniture.

### Flexible Design

Smart design for quick and  
easy reconfiguration.

### Modular Connection

A perfect fit that works  
as a system.



# Ideas for Primary Spaces

Primary Classroom Idea #1

This space

9

Products

30

Students

64m<sup>2</sup>

Floor area



Create agile learning spaces with a mix of Twist'n'Lock™ Square and Twist'n'Lock™ Rectangle Tables. Their linear shapes allow them to work together, supporting an array of group and individual activities as well as ways of learning.

Setting made up of Postura® Max Chairs and Twist'n'Lock™ Rectangle Tables

## Twist 'n' Lock™ Tables

Create brilliant collaborative spaces using our cleverly designed pin-less leg table system. Designed with modularity in mind and available in a range of shapes, all our Twist'n'Lock™ Tables work together to make great settings. Plus, they're all height adjustable making them perfect for all Primary school grades.

**Add a splash of colour to your classroom with 6 leg colours to choose from**



## Organise Tote Storage Range

A colourful and practical way to tidy and organise your teaching and student materials. With space at a premium, our practical and adaptable storage systems are more important than ever.



Available in a range of configurations



# Ideas for Primary Spaces

Primary Classroom Idea #2

This space

**11**  
Products

**30**  
Students

**64m<sup>2</sup>**  
Floor area



Students learn in their own way with comfort playing a big part in concentration. Tiered learning environments allow students the freedom to personalise their learning experience and choose where to sit or stand on any given day. Create a tiered learning space and improve sightlines between student and teacher, enhancing student engagement.

Setting made up of Postura® Plus Gaslift Chair, Twist'n'Lock™ Semi Table and Round Ottomans

## Postura® Plus Stool



Available in a wide range of colours

Based on the genuine science behind the original Postura®, the stool is ergonomically designed to be ultra-durable and seriously comfortable for long sitting periods.



Robust, functional and easy to move

## Create-A-Space Bench

Create an exciting tiered element to the classroom, improving sightlines and enhancing student engagement.



# Ideas for Primary Spaces

Primary Classroom Idea #3

This space

**8**  
Products

**30**  
Students

**64m<sup>2</sup>**  
Floor area



A mix of Twist'n'Lock™ StingRay Tables and colourful Postura Max® Chairs can turn a drab looking classroom into a vibrant and engaging learning space. Flexible and modular, you can mix and match to quickly reconfigure your classroom to suit the topic of the day or the learning mode required.

Setting made up of Postura® Max Chairs and Twist'n'Lock™ StingRay Tables

## Tik Tok

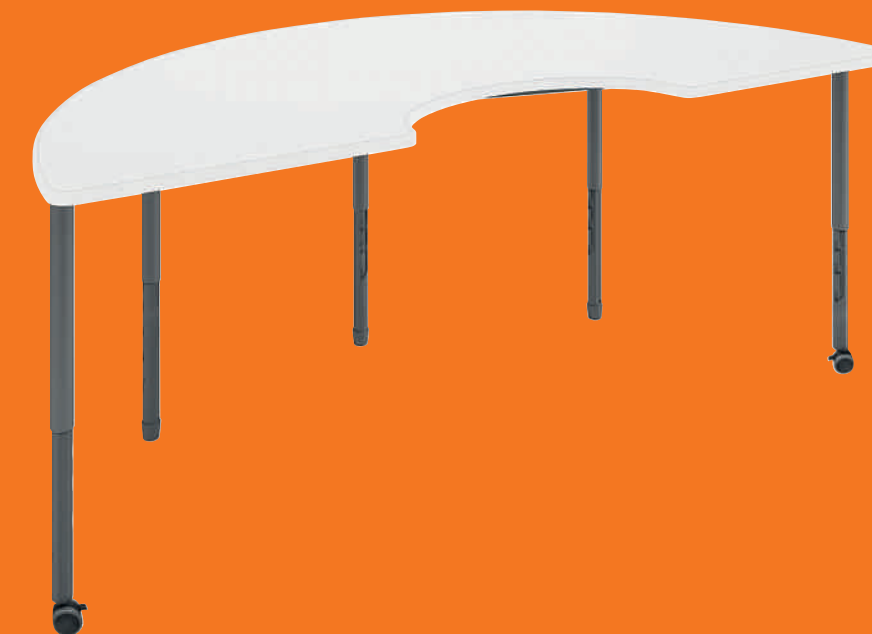
Add personality to your spaces with our bright and funky Tik Tok Stools. Create healthy sitting by improving body strength and encouraging mobility.

Active movement and non-slip design



## Twist'n'Lock™ Semi Table

Make the ideal student and teacher zone by combining our Twist'n'Lock™ Semi Table with our Postura® Plus Gaslift and Tik Tok Stools.





# Ideas for Secondary Spaces

Secondary Classroom Idea #1

This space

9

Products

28

Students

64m<sup>2</sup>

Floor area



Setting made up of Postura® Plus Sled Base Stools, Pirouette Tables, Smart Softies™ and Create-A-Tables

## Pirouette Table

Allow for student collaboration in the learning environment with our Pirouette tables. Writeable surfaces make it easy for ideation in a group setting.

**Clever fusion of sophistication, simplicity and functionality**



## Smart Softies™

Pair our new Smart Softies™ products with Pirouette tables and Postura® stools to create the perfect tiered learning setting.

**Transform your spaces and create your ideal breakout zones**





# Ideas for Secondary Spaces

Secondary Classroom Idea #2

This space

5

Products

28

Students

64m<sup>2</sup>

Floor area



Setting made up of Postura®  
Max Chairs and Twist'n'Lock™  
StringRay Tables

Tiered classrooms are great in a secondary learning environment. This allows for all students to engage and collaborate in a group setting or in smaller group settings. Along with being flexible, the tiered setting optimises visibility for both students and teachers of the classroom.

## Mobile Teachers Station

Designed with the active teacher in mind and perfect for innovative learning environments. Our Mobile Teachers Stations are a practical tool that move easily from space to space.



## Create-A-Table Range

Designed to work beautifully in learning areas, the Create-A-Table range offers different shapes to help transform your spaces with dynamic settings.



Robust, good looking and functional, our Create-A-Table range is designed for maximum flexibility and multi modal applications



# Ideas for Secondary Spaces

Secondary Classroom Idea #3

This space

**8**  
Products

**30**  
Students

**64m<sup>2</sup>**  
Floor area



The ultimate space where students can come together to collaborate, discuss, problem solve and work closely with their peers. Students can choose their own experience based on their individual or group needs from table and chairs, to comfortable soft seating, the choice is theirs.

Setting made up of Smart Softies™, Create-A-Tables and Round Ottomans.

## Create-A-Tables on Castors Dome

Create your ideal collaborative settings using the Create-A-Table on Castors Dome. Add to our Create-A-Table on Castors Rectangle or use together to create a Round Table setting.



## Smart Softies™

Our new Smart Softies™ Bloc Ottomans can integrate perfectly within a classroom and allow smaller breakout spaces for collaboration.

Create flexible, functional and fun settings using our super smart system



# Ideas for Secondary Spaces

Science Room

This space

4

Products

28

Students

64m<sup>2</sup>

Floor area



An effective laid out science lab promotes engagement and efficiency in the learning environment. The use of ergonomic and comfortable furniture where students can easily explore, experiment, and discover amazing new things.

Setting made up of  
Create-A-Space Bench  
and Postura® Plus Stools

## Create-A-Space Bench

Create-A-Space Benches are perfect for interactive and engaging learning environments. The cleverly designed steel frames offer stability without interfering with stools and people, making it ideal for a flexible classroom.



## Postura® Focus Stool

Designed with ergonomics in mind, the Postura® Focus Stools are a simple yet stylish solution for modern learning environments.

**Proudly Australian made and  
available in a wide range of colours**



# Ideas for Secondary Spaces

STEM Room

This space

**7**  
Products

**23**  
Students

**64m<sup>2</sup>**  
Floor area



Create that perfect blended learning environment that supports an interdisciplinary approach and provokes creative thinking, critical thinking, and problem-solving skills. Set up an environment where there is enough for students to get hands on and carry out experiments.

Setting made up of Focus Table and Postura® Max Chairs

## Focus Tables

Our Focus Tables are perfect for students to brainstorm around as a group or individually. Pair with our Postura® Max chairs and allow ideas to flow.



## Postura Max®

You know you're getting the genuine item, the real deal, the "geez, that's clever" original. Proudly Australian made, our Postura Max® is overengineered to be the best and most comfortable, it's the perfect choice for any school classroom.

**Proudly engineered to be the best, we offer a serious 20 years warranty for serious quality.**



# Ideas for Library Spaces

## Library Space Idea

Create the ultimate Student Resource Centre for both Primary and Secondary students, one that stirs creativity and encourages collaboration. A Space where students are excited to research, learn and grow.

Our new Smart Softies™ range allow you to create a fun and functional space by using our modular furniture that works perfectly together.

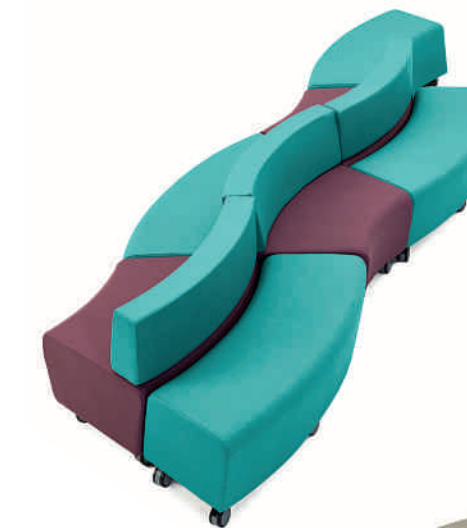
Our integrated bookcases are a clever extension of the Smart Softies™ range, making them ideal for all your library needs.

Library space is made up of Smart Softies™, Bookcases, Twist'n'Lock™ Tables, Focus Tables, Create-A-Table on Castors and Pirouette Tables



Explore our product range  
Soft furnishing solutions

Smart  
Softies™



Smart Softies™ have been designed from the inside out to be eco-friendly, seriously durable, super comfy and so flexible you can reinvent spaces as often as you like.

Smart internal Eco-struts made from 100% recycled polypropylene.

Smart Designs with angled backrests for greater comfort and support, and base heel relief for sleeker look and less scuffing.



How can something  
so clever be so comfy?  
Sebel soft furnishings  
bring people together.  
They're more collaborative,  
cosier, colourful and cool –  
and we've just made them  
a whole lot smarter.

Smart  
Softies™



Smart Durability with high density foam padding, quality materials and heavy-duty castors.

Smart Comfort with high/low backrests, or no backs at all.

Smart Teamwork with our integrated bookcases – a perfect fit for libraries and resource centres.





# Colour Combination Guide



Avocado



Grape



Jaffa



Innova – Pacifica Marina



Austex – Tessuto Verde



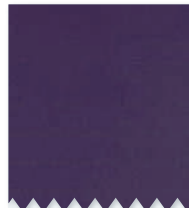
Blue



White



Slate



Innova – Pacifica Purple Passion



Innova – Pacifica Blue Lagoon



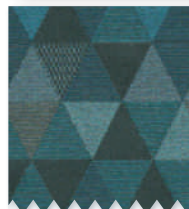
Aqua



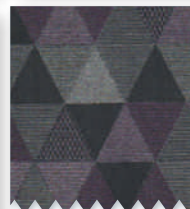
White



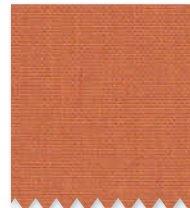
Blue



Wortley – Harlequin Capri



Wortley – Harlequin Aubergine



Austex – Tessuto Mandarin



Innova – Pacifica Fijian Sunset



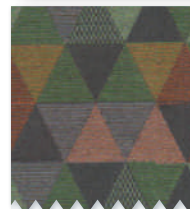
Pine Lime



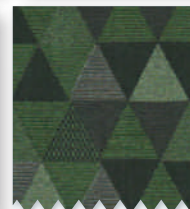
White



Green



Wortley – Harlequin Autumn



Wortley – Harlequin Spearmint

## Using colour to create inspiring spaces

We know that choosing a colour palette can be quite daunting, so we've created a selection of colour ideas to inspire and help you create beautifully coloured and engaging spaces that will stir creativity and encourage collaboration. Spaces where students are excited to learn, and teachers are inspired to teach.



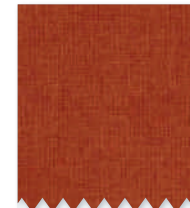
Jaffa



Aqua



Dark Grey



Warwick – Beachcomber Terracotta



Austex – Tessuto Marina



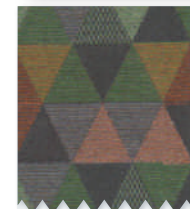
Warm Grey



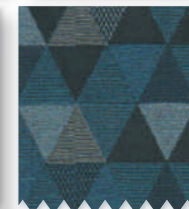
White



Slate



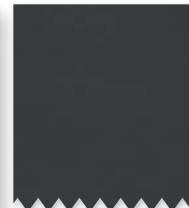
Wortley – Harlequin Autumn



Wortley – Harlequin Atlantic



Innova – Pacifica Blue Lagoon



Innova – Pacifica Seal Rock



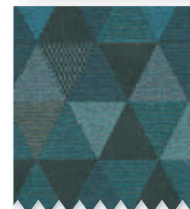
Dark Grey



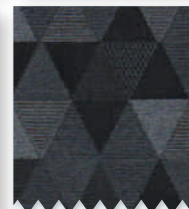
Oyster Grey



Sublime Teak



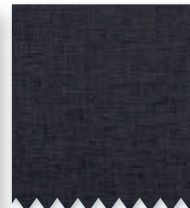
Wortley – Harlequin Capri



Wortley – Harlequin Flint



Innova – Pacifica Marina



Warwick – Beachcomber Graphite



Slate



White




Blue



Explore our product range  
Seating solutions



 Designed here, made here, and loved by generations of Australians

We create flexible, comfortable, clever furniture that is super durable. Browse our product solutions, you'll be sure to find exactly what you need!

# Get the real deal with Postura®

When you choose a Postura®, you know you're getting the genuine item, the real deal, the fair dinkum geez that's clever original.

Loved by over 11,000 schools and more than 5 million students since its creation, the Postura® is one of the biggest selling classroom chairs in the world.

Proudly engineered to be the best, the Postura Max® is today's favourite member of the Postura® family, due to its 6 additional features that make it seriously comfortable and ultra-durable. Students don't want to sit on anything else!



  
Pioneers of Plastic furniture manufacturing

  
The original iconic design

Available in a wide range of colours



**Postura Max® Chair**

- MAX SIZE 2 - Seat height 310mm
- MAX SIZE 3 - Seat height 350mm
- MAX SIZE 4 - Seat height 380mm
- MAX SIZE 5 - Seat height 430mm
- MAX SIZE 6 - Seat height 460mm



**Postura® Plus Linking Chair**

- 520mm(W) x 540mm(D) x 805mm(H)
- Seat height 460mm





**Postura® Focus Sled Base Stool**

- 480mm(W) x 500mm(D) x 560mm(H)
- 490mm(W) x 550mm(D) x 710mm(H)
- Seat height 500mm or 650mm





**Postura® Plus Sled Base Stool**

- 510mm(W) x 525mm(D) x 1005mm(H)
- 510mm(W) x 525mm(D) x 1105mm(H)
- Seat height 650mm or 750mm(H)





**Postura® Plus Reverse Cantilever Chair**

- 530mm(W) x 545mm(D) x 815mm(H)
- Seat height 460mm





**Postura® Plus Gaslift Chair with Upholstered Seat Pad**

- 600mm(W) x 600mm(D) x 790-920mm(H)
- Seat height 420-560mm

# Meet the Postura® family



Make it personal.

Hot stamp your school logo or tagline!



Explore our product range  
Seating solutions

# Bringing people together with Progress

Proudly Australian made and unrivalled on durability and comfort, Progress is a no brainer when it comes to mass seating.

Lightweight, stackable, linkable and seriously comfortable, our chairs have long been the go-to choices for schools and assembly halls. They provide a generous sized seat for serious comfort and support for all your functions, student gatherings, events and learning activities.



Unrivalled on **durability** and **comfort**



**Progress Chair**

- 510mm(W) x 530mm(D) x 840mm(H)
- Seat height 460mm
- With or without links



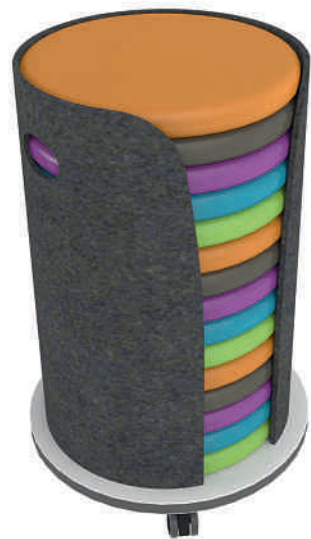
**Integra Chair**

- 510mm(W) x 560mm(D) x 810mm(H)
- Seat height 450mm



**Hobnob Upholstered Sled Base Side Chair**

- 620mm(W) x 590mm(D) x 790mm(H)
- Seat height 450mm



**Create-A-Pods with Holder**

- 475mm(W) x 475mm(D) x 740mm(H)
- Comes with 15 Create-A-Pods

Create engaging tiered **learning environments**



**Cushpods**

- 440mm(W) x 345mm(D) x 28mm(H)
- Sold as a rainbow pack of 5 colours



**Postura® Focus Sled Base Stool**

- 480mm(W) x 500mm(D) x 560mm(H)
- 490mm(W) x 550mm(D) x 710mm(H)
- Seat height available in 500mm or 650mm



**Tik Tok Stool**

- 300mm diameter
- Seat height available in 400 or 500mm



**Postura® Plus Sled Base Stool**

- 510mm(W) x 525mm(D) x 1005mm(H)
- 510mm(W) x 525mm(D) x 1105mm(H)
- Seat height 650mm or 750mm



**Cosmic Stool**

- 350mm diameter
- Seat heights 505, 605 or 655mm

## Range of Stools & Floor Cushions





# Versatility with our Twist'n'Lock™ Tables

Create brilliant collaborative spaces using  
our cleverly designed pin-less leg table system.

Drawing from the same spirit of innovation, clever research and genuine science that  
gave us our start, we continue to look for ways to make our products better and smarter.

Our simple yet brilliant Twist'n'Lock™ pin-less leg design makes adjusting table heights  
a breeze, plus they are seriously engineered (like all our products) to be ultra-durable  
and long lasting.

Tabletop available in standard laminates or writeable.

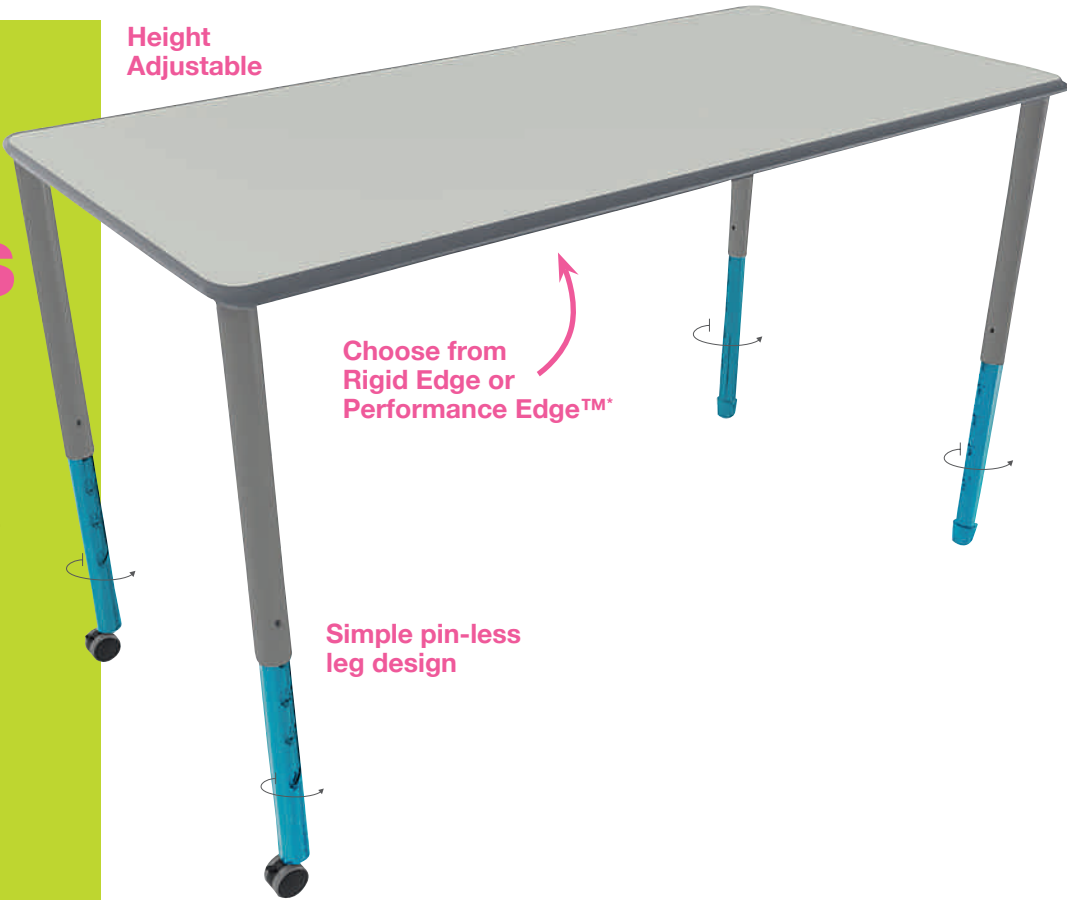
6 great leg colours to choose from.



Choose from Rigid Edge or Performance Edge™\*

\* Performance Edge™ is only available on some of our Twist'n'Lock™ range.  
Please speak with our friendly staff for details.

Add a splash of  
colour to your  
classrooms



Twist'n'Lock™  
Rectangle Table

- 1200mm(W) x 600mm(D)
- Table heights 520, 580, 630, 680, 720 & 760mm(H)
- Available in Rigid Edge or Performance Edge™



Twist'n'Lock™  
Square Table

- 600mm(W) x 600mm(D)
- Table heights 520, 580, 630, 680, 720 & 760mm(H)
- Available in Rigid Edge or Performance Edge™

Twist'n'Lock™  
Trapezoidal Table

- 1200mm(W) x 600mm(D) x 520mm(H)
- Table heights 520, 580, 630, 680, 720 & 760mm(H)
- Rigid Edge only

Twist'n'Lock™  
Round Table

- 1050mm diameter
- Table heights 520, 580, 630, 680, 720 & 760mm(H)
- Rigid Edge only



Twist'n'Lock™  
StingRay Table

- 600mm(W) x 600mm(D)
- Table heights 520, 580, 630, 680, 720 & 760mm(H)
- Rigid Edge only



Twist'n'Lock™  
Semi Targeted Teaching Table

- 1800mm(W) x 900mm(D)
- Table heights 520, 580, 630, 680, 720 & 760mm(H)
- Rigid Edge only

## Performance Edge

Get the edge

The Performance Edge™\* tapered  
edging reduces pressure on  
students' forearms caused by leaning  
and writing, making them the most  
comfortable tables around.  
Highly durable, there will be no  
pulling the edge off these!





Explore our product range  
Table solutions

# Create-A-Table

Robust, good looking and functional, our Create-A-Table range is designed for maximum flexibility and multi-modal applications.

They work together as a system, allowing you to swap and change your table configurations to suit your evolving learning environments!

Tabletop available in standard laminates or writeable.  
Warm Grey legs.



## Create-A-Table

- 600mm(W) x 600mm(D)
- 1200mm(W) x 600mm(D)
- Table heights 535, 580, 630, 680 & 720mm(H)
- Available in Rigid Edge or Performance Edge™

NEW

## Create-A-Table on Castors Dome

- 1370mm(W) x 900mm(D)
- Table height 720mm(H)



## Create-A-Table on Castors Single

- 750mm(W) x 685mm(D)
- Table height 720mm(H)



## Create-A-Table on Castors Double

- 1370mm(W) x 685mm(D)
- Table height 720mm(H)



## Create-A-Table on Castors StingRay

- 1186mm(W) x 685mm(D)
- Table height 720mm(H)



## Create-A-Table on Castors Dark

- 1370mm(W) x 685mm(D)
- Table height 720mm(H)



## Create-A-Space Bench

- 1500mm(H) x 900mm(D)
- Table height 900mm(H)



## Create-A-Bench

- 1200mm(W) x 600mm(D)
- Table height 900mm(H)



NEW

## Teachers Desk

- 1200mm(W) x 735mm(D)
- Table height 720mm(H)

# Pirouette Tables

The Pirouette is a clever fusion of sophistication, simplicity and functionality.

It's clean design and superior quality set it apart from standard desks. Popular with schools and universities across the globe, the Pirouette is flexible for simple maneuverability and adaptability.

Available in 2 great styles and a range of heights, the Pirouette is designed to maximise space and flexibility, support ideation and dynamic presentation ideas.

Nest & Store it

Write & Ideate on it

Flip & Present on it



## Pirouette Curved Table - Fixed Legs

- 1072mm(W) x 450mm(D)
- Table height 720 & 910mm(H)

## Pirouette Rectangle Table - Fixed Legs

- 1200mm(W) x 450mm(D)
- Table height 720 & 910mm(H)



## Adjustable Table - T Frame Double

- 1200mm(W) x 600mm(D)
- Table heights 540, 585, 630, 675 & 720mm(H)
- Available with or without drawers
- Available in Rigid Edge or Performance Edge™



## Adjustable Table - T Frame Single

- 600mm(W) x 600mm(D)
- Table heights 540, 585, 630, 675 & 720mm(H)
- Available with or without drawers
- Available in Rigid Edge or Performance Edge™



## Focus Table

- 1200mm diameter
- Table height 710mm(H)



## C Leg Desk

- 600mm(W) x 600mm(D)
- Table heights 650, 680, 720mm(H)
- Available with or without drawers
- Available in Rigid Edge or Performance Edge™



## Folding Exam Table

- 900mm(W) x 450mm(D)
- Table height 720mm(H)
- Available in Performance Edge™



Explore our product range  
Soft furnishing solutions



**Smart Softies™ Astral**

- 820mm(W) x 705mm(D) x 715mm(H)
- Seat height 430mm
- Available on castors only



**Smart Softies™ Orbit**

- 1000mm diameter x 430mm
- Seat height 430mm
- Available on castors only



**Smart Softies™ Orbit - Writeable Top**

- 1000mm diameter x 450mm
- Seat height 450mm
- Available on castors only



**Smart Softies™ Trap - No Back**

- 1530mm(W) x 650mm(D) x 430mm(H)
- Seat height 430mm
- Available on castors only



**Smart Softies™ Trap - Low Back Long Edge**

- 1530mm(W) x 650mm(D) x 715mm(H)
- Seat height 430mm
- Available on castors only



**Smart Softies™ Trap - Low Back Short Edge**

- 1530mm(W) x 650mm(D) x 715mm(H)
- Seat height 430mm
- Available on castors only



**Smart Softies™ Worm - No Back**

- 1060mm(W) x 650mm(D) x 430mm(H)
- Seat height 430mm
- Available on castors only



**Smart Softies™ Worm - Low Back**

- 1060mm(W) x 650mm(D) x 715mm(H)
- Seat height 430mm
- Available on castors only



**Smart Softies™ Worm - High Back**

- 1060mm(W) x 650mm(D) x 900mm(H)
- Seat height 430mm
- Available on castors only

New  
**Smart Softies™**

**Smarter Soft Seating.**

Our brand new range raises the bar on every level. Smart Softies™ have been designed from the inside out to be eco-friendly, seriously durable, super comfy and so flexible you can reinvent spaces as often as you like.

Easy to move, fun to fit together and friendlier on the planet, they're a perfect match with our integrated bookcases.

Give your learning spaces some extra love with Smart Softies™.

Have fun transforming your spaces and creating your ideal breakout zones.



**Smart Softies™ Table - Writeable Top**

- 650mm(W) x 650mm(D) x 450mm(H)
- Seat height 450mm
- Available on castors only

The super smart system that's  
**flexible, functional and fun.**



**Smart Softies™ Bloc 1200 - No Back**

- 1200mm(W) x 650mm(D) x 430mm(H)
- Seat height 430mm
- Available on castors only



**Smart Softies™ Bloc 1200 - Low Back**

- 1200mm(W) x 650mm(D) x 715mm(H)
- Seat height 430mm
- Available on castors only



**Smart Softies™ Bloc 1200 - High Back**

- 1200mm(W) x 650mm(D) x 900mm(H)
- Seat height 430mm
- Available on castors only



**Smart Softies™ Bloc 1200 - Backer**

- 1200mm x 500mm x 430mm
- Seat height 430mm
- Available on castors only



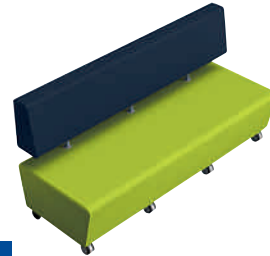
**Smart Softies™ Bloc 1800 - No Back**

- 1800mm(W) x 650mm(D) x 430mm(H)
- Seat height 430mm
- Available on castors only



**Smart Softies™ Bloc 1800 - Low Back**

- 1800mm(W) x 650mm(D) x 715mm(H)
- Seat height 430mm
- Available on castors only



**Smart Softies™ Bloc 1800 - High Back**

- 1800mm(W) x 650mm(D) x 900mm(H)
- Seat height 430mm
- Available on castors only



**Smart Softies™ Bloc 1800 - Backer**

- 1800mm x 500mm x 430mm
- Seat height 430mm
- Available on castors only



**Smart Softies™ Curve - No Back**

- 1970mm(W) x 650mm(D) x 430mm(H)
- Seat height 430mm
- Available on castors only



**Smart Softies™ Curve - Low Back**

- 1970mm(W) x 650mm(D) x 715mm(H)
- Seat height 430mm
- Available on castors only



**Smart Softies™ Curve - High Back**

- 1970mm(W) x 650mm(D) x 900mm(H)
- Seat height 430mm
- Available on castors only



**Smart Softies™ Curve - Backer**

- 1405mm x 500mm x 430mm
- Seat height 430mm
- Available on castors only



Explore our product range  
Soft furnishing solutions

# Other Soft Furnishing Favourites



Perfect for  
staffrooms,  
reading corners  
and libraries



**Relax Chair**

- 520mm(W) x 748mm(D) x 390mm(H)



**Create-A-Mats**

- 1200mm(W) x 800mm(D) x 300mm(H)
- 800mm(W) x 800mm(D) x 300mm(H)
- Only available in Sustainable Living Renegade colours



**Create-A-Pods with Holder**

- 475mm(W) x 475mm(D) x 740mm(H)
- Comes with 15 colourful Create-A-Pods



**Round Ottoman**

- 400mm diameter
- Seat height 440mm
- Available on glides only

# Bookcase Solutions

Add practicality to your spaces  
with our Australian-made  
integrated bookcase solutions.

Ideal for libraries and common areas, our modular Bookcases are a clever extension of our Smart Softies™ Ottoman range, fitting perfectly into a huge range of settings.

Stylish and practical, they'll look great and provide you with ample storage space at the same time.



**Straight Bookcase**

- 1230mm(W) x 450mm(D)
- Available in 720mm & 900mm(H)



**Curved Bookcase**

- 1447mm(W) x 450mm(D)
- Available in 720mm & 900mm(H)



**Mobile Teachers Station**

- Unit: 450mm(W) x 560mm(D) x 1060mm(H)
- Top Only : 700mm(W) x 655mm(D)
- Available with drawers

# Organise Tote Storage Range

A colourful and practical way to organise  
and tidy your learning environments.

With space at a premium and increasing complexity within learning environments, our practical and adaptable storage system is more important than ever!

Our storage units can be arranged and rearranged again and again for teaching materials, personal storage and bag storage.

Available in 3 great laminate colours.

Easy to move



**Organise Tote Storage Triple Bay**

- 1051mm(W) x 450mm(D)
- Available in 900mm or 1060mm(H)



**Organise Tote Storage Double Bay**

- 708mm(W) x 780mm(D) x 900mm(H)



**B-53 Mobile Storage Cabinet**

- 1175mm(W) x 435mm(D) x 865mm(H)



Explore our product range  
Finishing solutions

# Chairs and Stools

## Finishes Guide

Use our colour guide to get the  
exact look you are after!

### Chairs & Stools

Postura Max Chairs, Postura Plus Reverse Cantilever Chairs, Postura Focus Sled Base Stools, Cosmic Stools, Postura Plus Sled Base Stools



Please note: Not all colour options are available on all Sebel products. Please contact our friendly customer service team for confirmation of colours. There may be slight variations in colour, texture and finish between printed colours and the actual product.

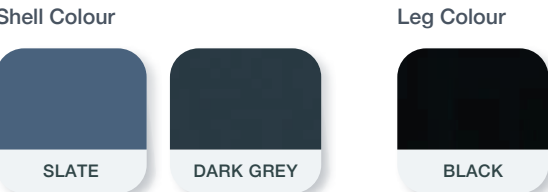
### Plastic colours for chairs, stools & other

Minimum Order Quantities may apply to certain colours and products. Please speak with our friendly customer service staff for details.

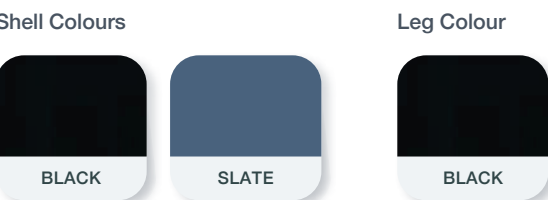
#### Postura Plus Linking Chair



#### Postura Plus Gaslift Chair



#### Progress Chair



#### Integra Chair



#### Tik Tok Stools



### Table Top Colours

C Leg Tables, Adjustable T leg Tables and Create-A-Tables



Performance Edge™ Tops



Edge (Polyurethane)



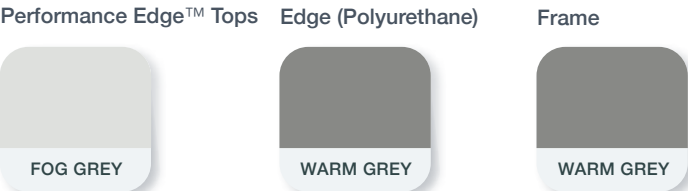
Create-A-Tables On Castors, Pirouette Tables, Focus Tables, Create-A-Benches and Create-A-Space Benches



#### Teachers Desk



#### Folding Exam Table



# Table

## Finishes Guide

#### Twist'n'Lock Tables



Performance Edge™ Tops



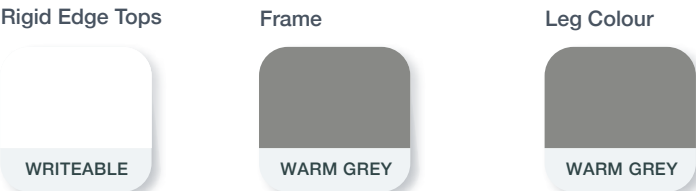
Edge (Polyurethane)



Leg Colours



#### Twist'n'Lock Semi Tables





Explore our product range  
Finishing solutions

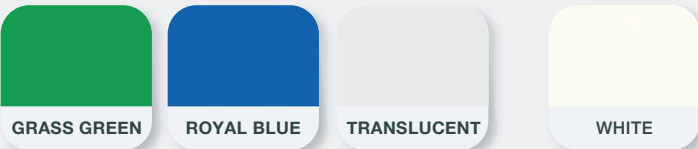
# Storage Finishes Guide

## Laminate Colours for Cabinetry

Edge colour must match top and side colour



Tote Trays – Organise Tote Storage Units    Tote Trays – B-53 Units



Please note: Not all colour options are available on all Sebel products. Please contact our friendly customer service team for confirmation of colours. There may be slight variations in colour, texture and finish between printed colours and the actual product.

## Smart Softies™ and Relax Chair

### Vinyl

Innova – Pacifica



Austex – Tessuto Classic



# Soft Furnishing Fabrics Guide

### Plain Fabric

Warwick - Beachcomber



### Patterned Fabric

Wortley - Harlequin



## Postura® Plus Gaslift

### Plain Fabric

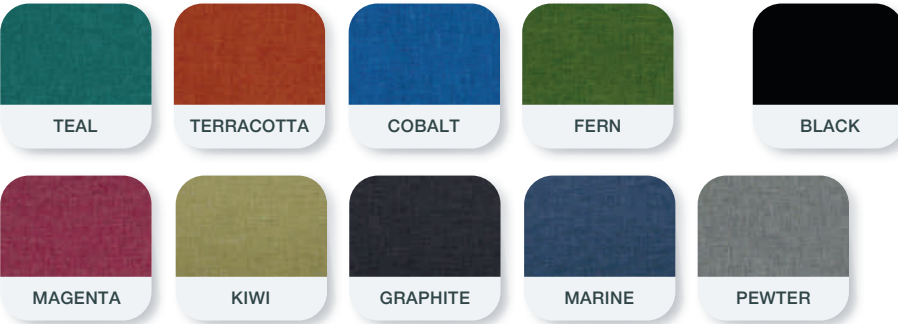
Warwick Beachcomber



## Hobnob Sled Base Side Chair

### Plain Fabric

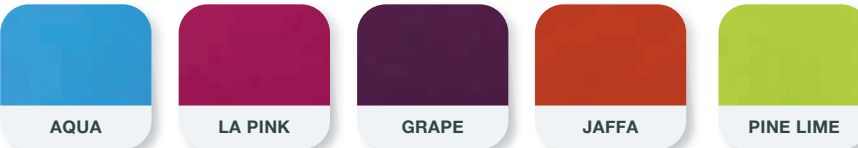
Warwick - Beachcomber



Leg Colour

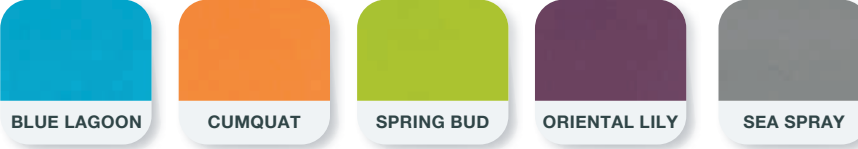
## Floor Cushions

### Cushpods



### Create-A-Pods

Innova – Pacifica (Vinyl)



### Create-A-Mats

Sustainable Living - Renegade (Fabric)





Get in touch  
with our Sebel Furniture Experts

No matter  
where you are,  
we can help  
you make  
your spaces  
**look  
great!**

Give our team  
a call today  
**1300 664 732**

[sales@sebelfurniture.com](mailto:sales@sebelfurniture.com)

Check out our full range at  
[www.sebelfurniture.com](http://www.sebelfurniture.com)



**We're here to help you get the furniture you want,  
delivered when you want it!**

**Plan early and take the pressure, stress and guesswork out of finalising your school furniture order.**

We're here to help you plan your requirements early so you get the furniture you want, when you want it!

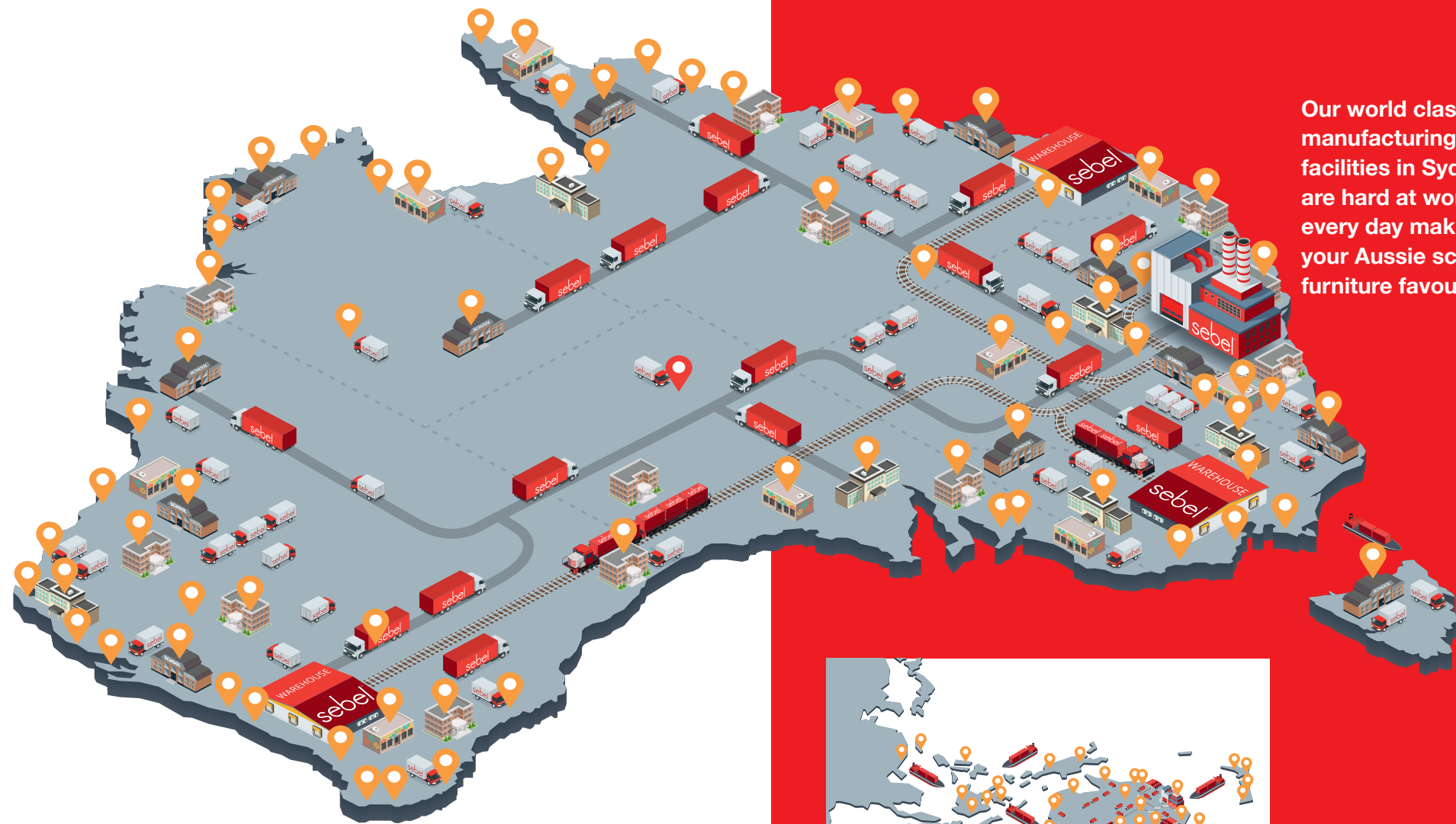
When it comes to furniture orders, timing is critical. You know you need to order your school furniture as early as possible to have it delivered at the time you need it (usually day one, term one).

But you also need time to finalise enrolments, right?! Worse, thousands of other schools are already rushing to place their orders and secure limited delivery allocations at the same time you want it.

We can help free you from the stress and worry – our friendly team are here to help with your requirements. Call them now on 1300 664 732 and they'll take you step by step through our delivery process and timeline.

**Getting started early  
is our little secret to you!**

Our talented manufacturing and supply teams work hard to ensure the efficient delivery of thousands of products to thousands of schools across Australia, all wanting furniture at the same time! Plan early to ensure you secure a delivery allocation for the time you need it.



**Our world class  
manufacturing  
facilities in Sydney  
are hard at work  
every day making all  
your Aussie school  
furniture favourites!**





**Smart design,  
built to last  
and quality all  
the way.**

For over 70 years Sebel has been making school furniture that is strong and fun, supportive and comfy, smart and cool. Our iconic furniture has become a staple in most classrooms across Australia, and continues to last the test of time. We create reliably better furniture so students and teachers can be their best. From iconic classics to innovative, new designs, we'll help you create flexible, dynamic learning spaces with proven, long-lasting value. It's our history and our promise. Sebel's furniture is loved by generations and is built to last for generations to come.

**We'd love to chat about what you need and how we can help.**

**Call us on  
1300 664 732**

**Email us at [sales@sebelfurniture.com](mailto:sales@sebelfurniture.com)**

**Check out our full range at [sebelfurniture.com](http://sebelfurniture.com)**

Please note: The colours shown have been reproduced to represent actual product colours as accurately as possible, however actual colours may vary. We recommend contacting your Sebel representative for a sample swatch for comparison prior to ordering. For more information or samples, contact your Sebel representative, or email [sales@sebelfurniture.com](mailto:sales@sebelfurniture.com)